



## COMPANY

### COMPANY

Kollmorgen Steuerungstechnik GmbH is one of Europe's largest and most successful non-proprietary Elevator Control Manufacturers. We have been a dependable and well respected supplier to the International Elevator Industry since 1965, with thousands of Control Systems installed over this period, further re-enforcing our elevator-related Credentials.

### WORLDWIDE

Our Headquarters and Manufacturing Facility is in Cologne, Germany. We have Sales and Service offices in Berlin, Ulm (Southern Germany), London, Wales (UK) and newly opened in Shanghai / China. It is this infrastructure that allows us to offer a "Global yet local", Service and Sales Network.

### PARTNERS

Active Partnerships with all important Associations such as VDMA, VFA, LEIA, and NAEC help channel the Focus of our Business and assure the cooperation with and Compliance to all relevant Norms and Standards.



### TEAM

Our innovative Team of focussed Professionals work in the Sales, Development, Engineering, Manufacturing and Service Departments, to offer the maximum Benefit of High-Performance Products, backed with our flexible Service approach.



### COMPETENCE

Our core Competency is centred on the Development, Manufacturing and Sales of the most innovative high quality Elevator Controls and Electro-technical Components, suited to all types of Elevators. Our whole Product Range is fully approved and compliant with European, Asian and the majority of North and South American Norms and Standards.



### QUALITY - MADE IN GERMANY

We view the outstanding Quality of our products as an important, long-term competitive factor. This Attention to detail covers our entire Scope of Products and Services, beginning with high-quality Consultation and by no means ending with our extensive After sales support. In the Production process all Processors and Components are subjected to computer-aided functional tests. Every Component is operated under simulated Real-life conditions using a special test facility, in order to ensure fault-free Operation in the field.



Quality Test Area



72-hour longterm check in heating cabinets

### CUSTOMER SUPPORT

Focussed Customer Support and a committed, open-working Relationship with our entire Customer base is Key. The flexibility of this Support is a major factor that has lead to our Sales Success. In real terms, "we are everywhere that the Customer needs us".

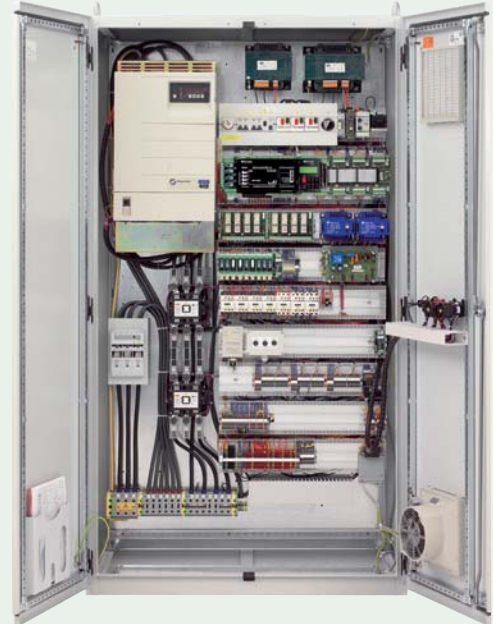


## PRODUCTS

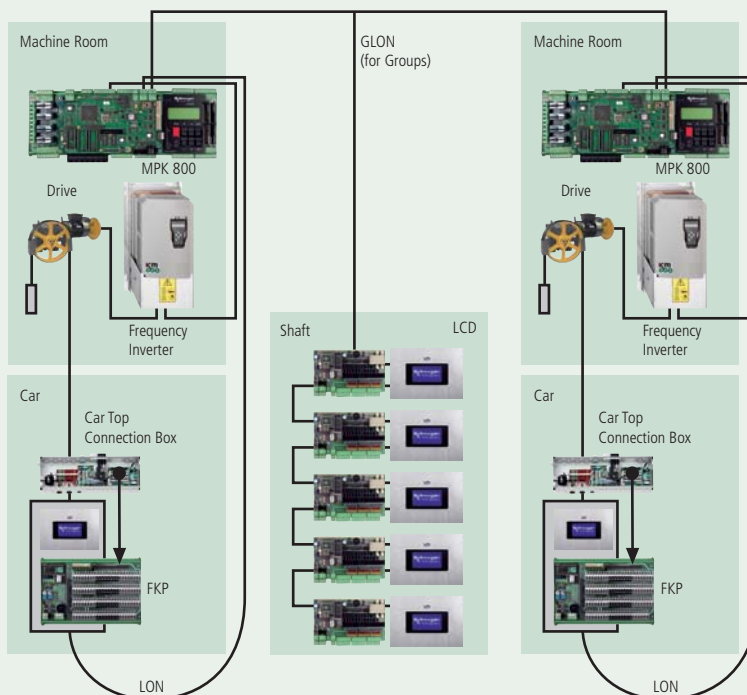
### OUR RANGE OF PRODUCTS

Our Products and Services are internationally sought. Thousands of Elevator Control systems are operating worldwide, underpinning our innovative Strengths, technical Capability and successful Penetration into this diverse Market.

Our Strengths are the Supply of complete Elevator Control Solutions for Industrial Applications, such as, for example, explosion-proof Applications for Heavy load Elevators; in addition, Elevators for TV & power station towers. We therefore provide a complete High Quality OEM-package including Microprocessor Controller and all necessary peripheral Components.

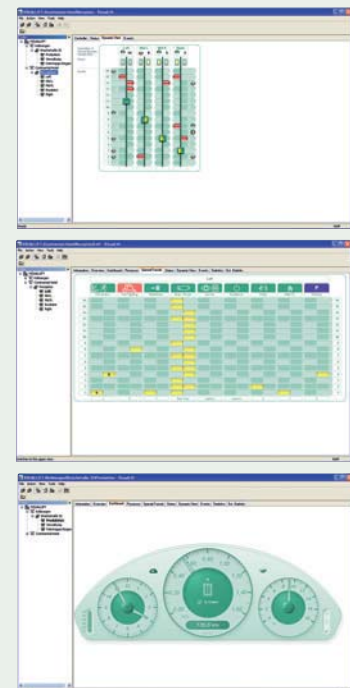


### DECENTRALISED CONTROL SYSTEM ARCHITECTURE



Example of 2-Car group MPK800

### VISUALLIFT



Remote Monitoring Software

## SERVICE & SUPPORT

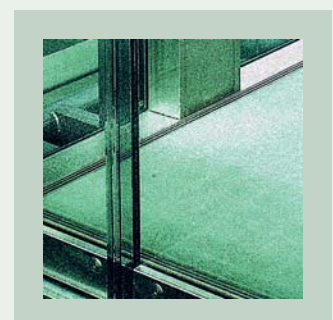
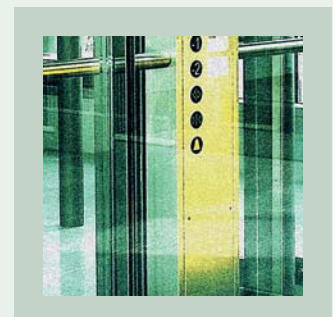
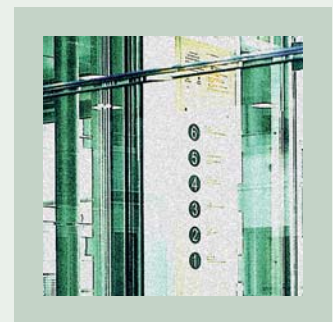
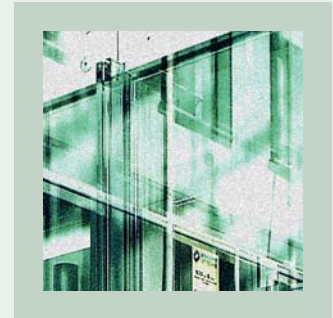
Our Service Department is able to provide both telephone hotline support and worldwide on-site support. Our Quality team manage the ongoing Development and Supply of comprehensive technical Documentation for each Control system supplied.

Our proven training courses provide the option of either basic, advanced or individually tailored training, available from either our offices, alternatively, at the Customer's Premises.

## Germany's leading Manufacturer for Elevator Control Systems since 1965

### The Kollmorgen Advantages:

- High Quality Control Systems Made in Germany
- Simplex Controllers / Multi-car Group Control Systems for Traction and Hydraulic Elevators, no Group Control Cabinet necessary
- Geared and Gearless, AC and DC Applications
- High Performance Motorola 32 Bits industrial CPU
- Diagnostics always provided on Board
- Configuration Interface for PC/Laptop/Handterminal
- Direct to Floor Speed Profile
- LON Field Bus Communication
- Advanced Remote Monitoring Software via LON/ Ethernet/ Modem
- Parametering Software Tool for Service Laptop
- Extended Technical Support, Product Documentation and Training



## REFERENCES

### INTERNATIONAL

Two example reference sites are the *Berliner Reichstag* and *Bundesrat* (German Parliament Buildings) in Berlin, & the *Houses of Parliament* in London, UK. Alongside these are numerous other highly customised, high-profile Installations.

Numerous users already prefer to use and specify Kollmorgen Control Solutions. Our industry penetration runs from Residential buildings through to Industrial, Chemical, Automobile, Electrical Power Companies as well as hospitals, hotels and office buildings.



Foreign Office, Berlin



Reichstag, Berlin



Houses of Parliament, London, UK



Federal Council, Berlin

## REFERENCES



Sage Theatre, Gateshead, UK



Zhangjiajie, China



Airport Tower, Amsterdam,  
Netherlands



IPC Media Tower, London, UK



Holiday Inn, Cheng Du, China

A short Extract from our Reference List demonstrates our industry commitment and success...

Bundestag, Bundesrat, Houses of Parliament, Frankfurt Airport, Fairgrounds Cologne, Central Hospital Aachen, Allianz Insurance, Deutsche Bahn, BASF, Henkel, Bayer, Pfizer, VW, Daimler Chrysler, Audi, EON, British Gas

Kollmorgen Steuerungstechnik GmbH  
Broichstraße 32  
51109 Köln  
Germany

Tel. +49(0)22189 85- 0  
Fax +49(0)22189 85-30

[info@kollmorgen.de](mailto:info@kollmorgen.de)  
[www.kollmorgen.de](http://www.kollmorgen.de)

Kollmorgen (Shanghai) Control System Trading Co. Ltd.  
PuFa Tower 21H  
Pudong Nan Rd. 588  
200120 Shanghai  
China

Tel. +86-21-58404941  
Fax +86-21-58404937

[info@kollmorgen.net.cn](mailto:info@kollmorgen.net.cn)  
[www.kollmorgen.net.cn](http://www.kollmorgen.net.cn)